



ALUMNI *for*  
**OBERLIN**  
**VALUES**

# The Big Disconnect

Oberlin and the Art of  
Alumni Dis-Engagement

# Here's What We're Talking About

- Alumni Trustee Election
- Issues We've Encountered
- The Alumni Association and the Alumni Leadership Council



# What I Want You to Get Out of This



Sorry,  
something went wrong

ALUMNI *for*  
**OBERLIN**  
**VALUES**



# The Alumni Trustee Election

Office of Alumni Engagement

**OBERLIN**  
COLLEGE & CONSERVATORY

**Vote in the 2024 Alumni Trustee Election!**



**Peter Staley '83**

[Learn more](#)



**Lisa Yvette Waller '87**

[Learn more](#)

# What's Going On?

<b>Issue</b>	<b>Raised with</b>
Request to forward invitation to trustee candidates	Office of Alumni Engagement, Alumni Leadership Council
Ending/redirecting donations	Office of Advancement
Rescheduling reunion and requiring alums to stay off campus	Office of Alumni Engagement

# Before New Bylaws

Alumni Association (40,000+)



Alumni Council (200+)



Executive Board (13-19)

**College**

Reunions

Staff

Budget

Admissions

Careers

Magazine/Comms.

Conservatory

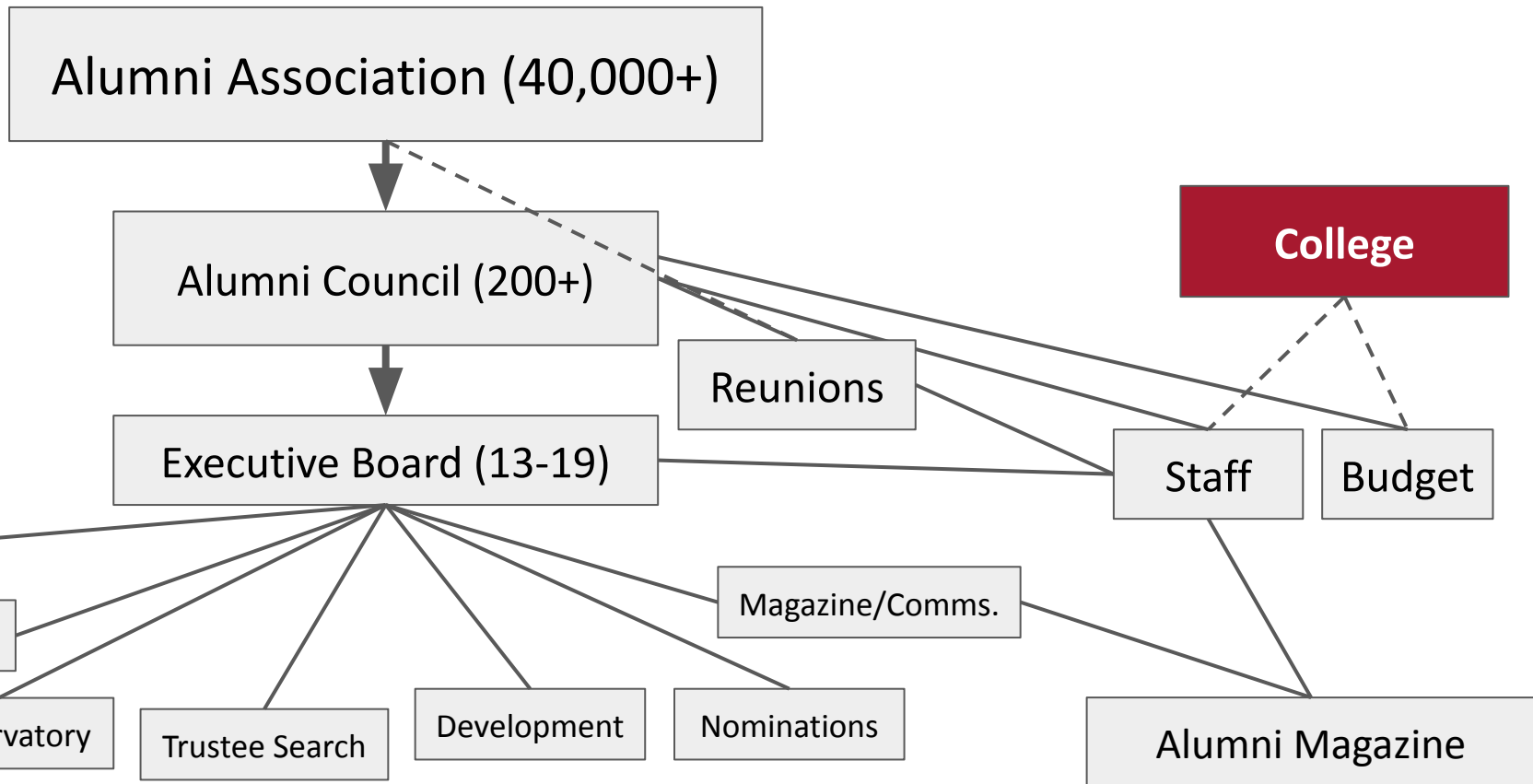
Trustee Search

Development

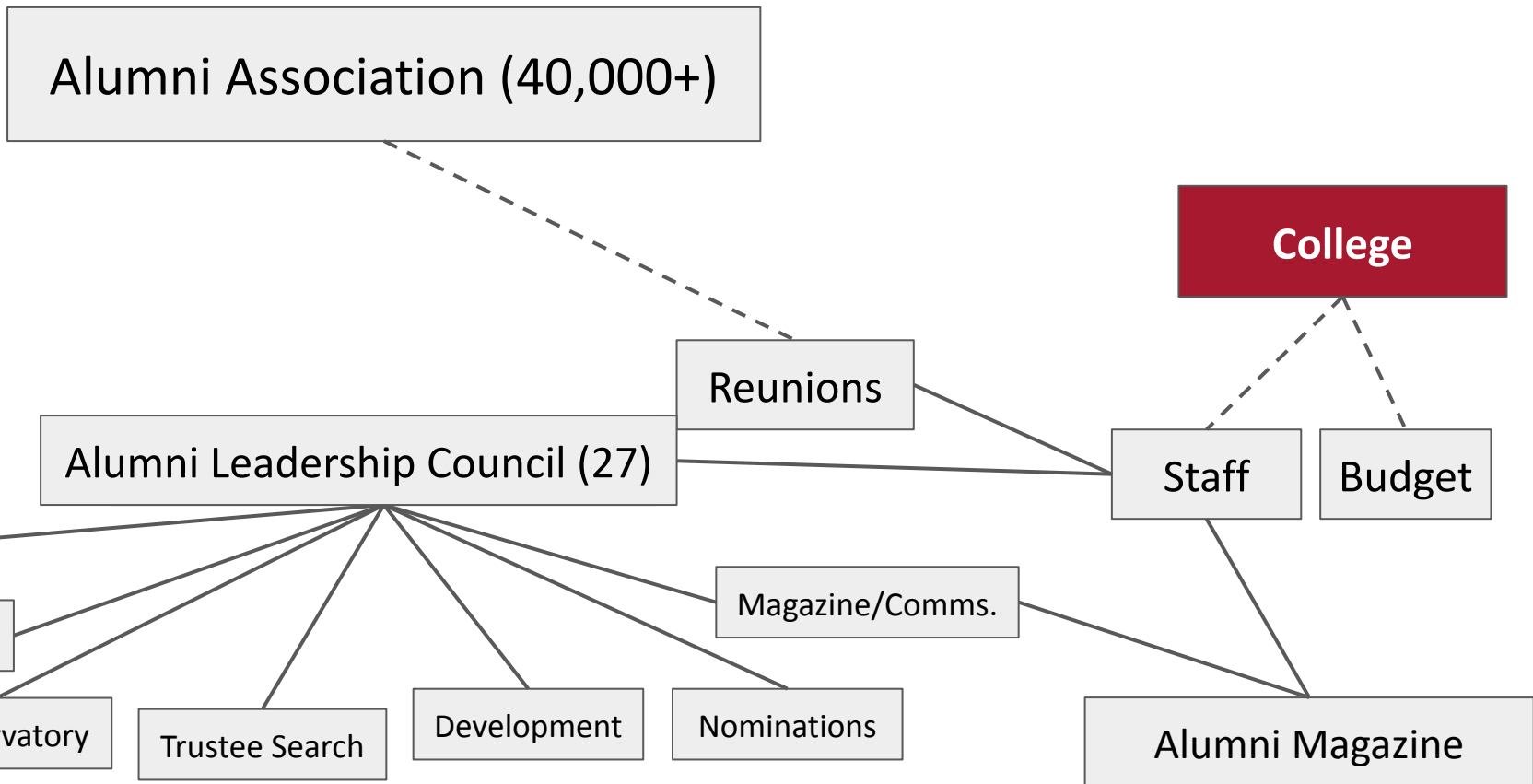
Nominations

Alumni Magazine

# New 2014 Bylaws (1)

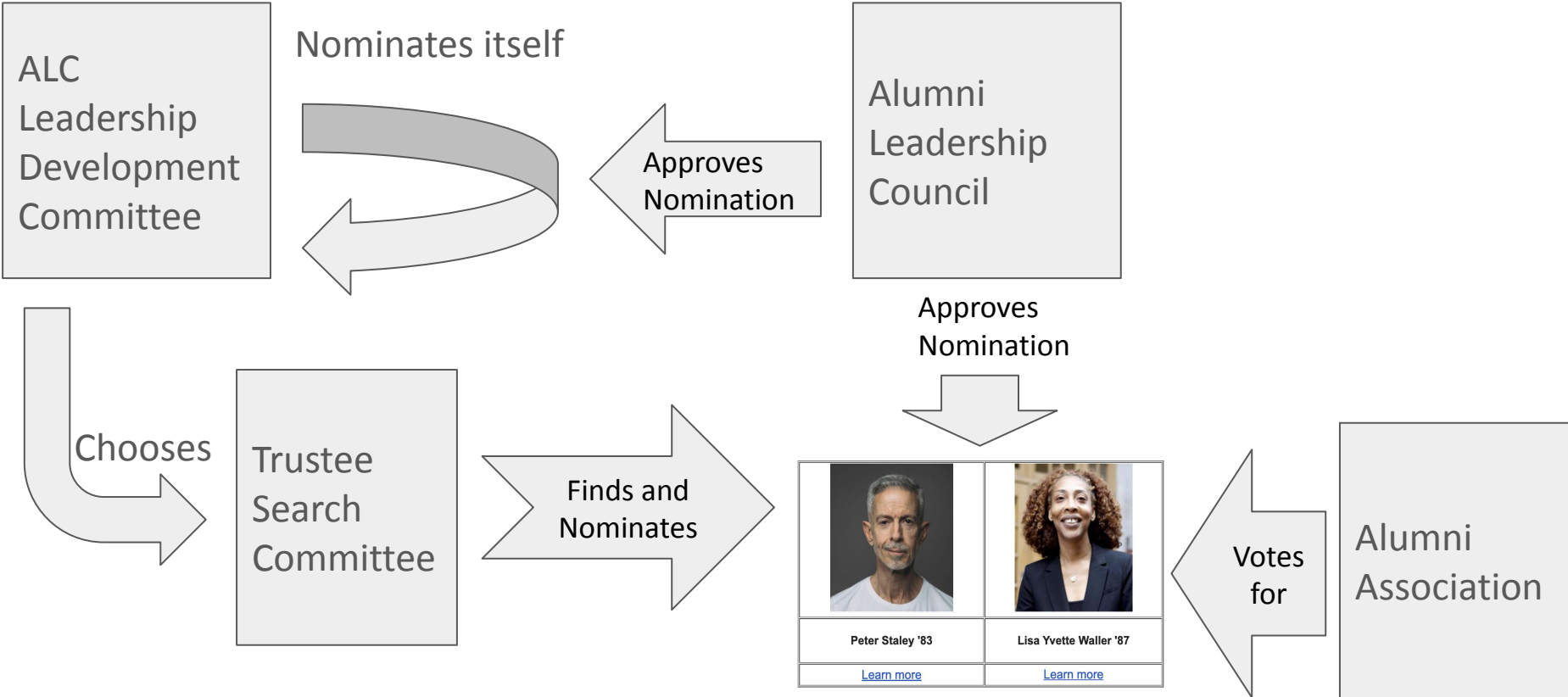


# New Bylaws (2)





# How an Alumni-Elected Trustee is Chosen



# New Bylaws (2)

Alumni Association (40,000+)

College

Reunions

Alumni Leadership Council (27)

Staff

Budget

Admissions

Careers

Magazine/Comms.

Conservatory

Trustee Search

Development

Nominations

Alumni Magazine

# New Bylaws (3)

Alumni Association (40,000+)

Alumni Leadership Council (27)

Reunions

College

Office of Advancement

Office of Communications

Staff

Alumni Magazine

Admissions

Careers

Conservatory

Trustee Search

Development

Nominations

# Impacts of Bylaw Changes and Reduced Alumni Input

Issue	Examples
High Staff Turnover	Less and worse engagement with alumni around the country; regional organizations dwindling
Less or End of Alumni Self-governance	Eliminated alumni advisory committees at the request of the college
One-Way Engagement	No interest in alumni perspective

ALUMNI *for*  
**OBERLIN**  
**VALUES**